

Alodiyan Lara Péttang

Lara the Yellow Ladybird



Mr. Khagiram Doley

Alodiyān Lara Péttāng

Lara the Yellow Ladybird

Written by Martha Evans

Designed by Nadene Kriel

Illustrated by Catherine Holtzhausen

Narrated by: Alice Macphillamy

Translated By Mg. Khagiram Doley

NEISEL

Mising

Lakhimpur, assam, India



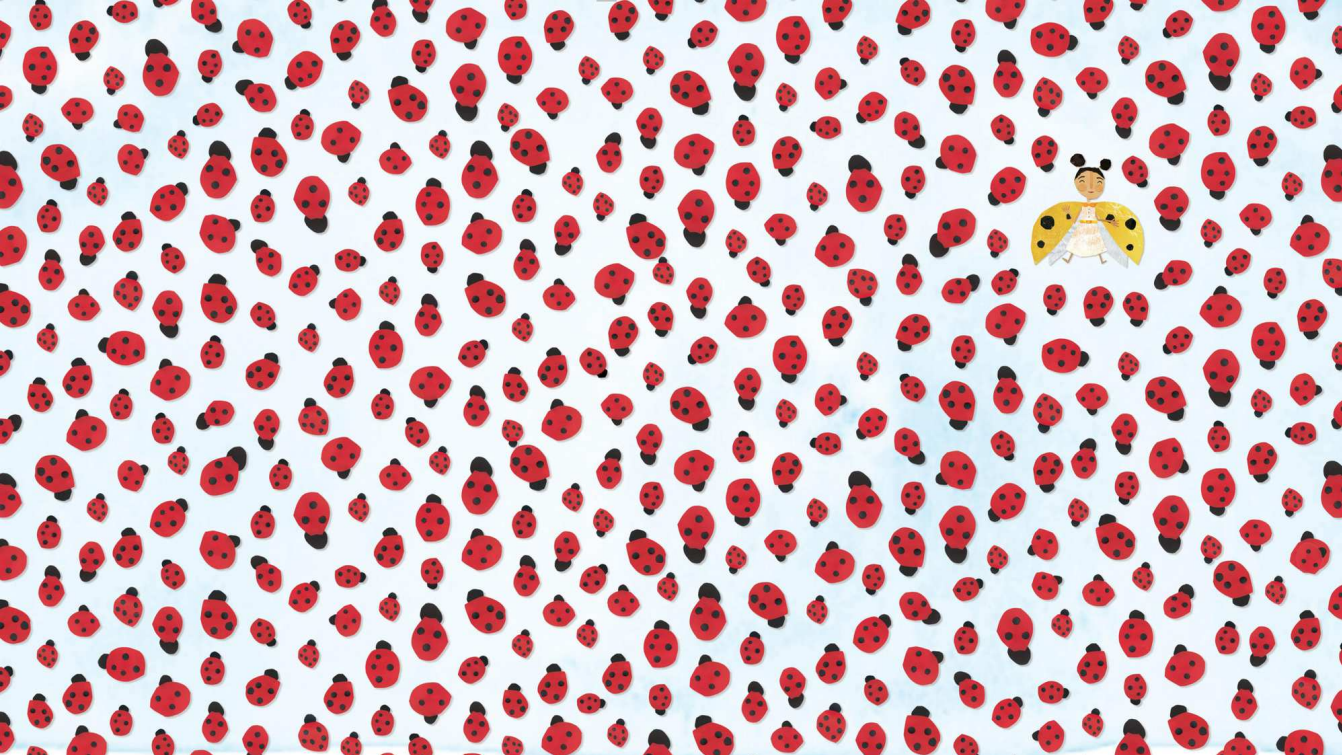
<http://creativecommons.org/licenses/by-nc-sa/4.0/>

You may not use this work for commercial purposes. You may adapt and add to this work, but you may distribute the resulting work only under the same or similar license to this one. You must keep the copyright and credits for authors, illustrators, etc.

Adapted from original, Copyright © 2016, Book Dash. Licensed under CC BY 4.0.

Lara the Yellow Ladybird

Illustrated by Catherine Holtzhausen Written by Martha Evans Designed by Nadene Kriel
with the help of the Book Dash participants in Cape Town on 5 March 2016.





Alodiyán pettangdé
anguru:né tapumko.
Bíkké alodiyán unjerné
alabé du:la oinu ajon
takamé bím
ka:lí:mang.



Appí:dé alodiya:n alabdém
ka:líksudag.



Sesa bí:lang mé:jubné
Mokora:bí:sin bím ka:la
mé:yumsudag.



Émpige:lam Larabí
oinukídí:démpé
ilí:dag. " ngo Mena
nok lí:né alabdémpag
lagidag", émna
kapkang.



Longékoném, Laramé bík
yo:dé lí:né ro:ngém alabdo
unte:dopé yonbito.





Longkon ro:do, sékosin
Laramé aidu:n ésin
émtoma, édémí:pé bí
atérdé iskulpé gíkang.





Édémí:pé bí gípí:to.



Bíkké ajon kídí:dé
sekosin aidu:n émna:sin
tattoma.



Lara bí atéré
du:lento.
sekosin bíké lí:né
alabdok ro:ng
yonnamdém kangkin
toma.

Mimé Miya bí gípí:la
luto je " yoa: nok
ka:po:né alodiya:n
alabdém ro:ngém ne
yontan!"





Laraké ajonkídí:dé ka:la
lémgosula luto "nok alabdé
aipé anguru:dag dei!"

"Lara," Mimé Miyabí
luto,
"Nok alodiyan
alapkídí:dé lang
koiddo:émpin alédé nom
ka:ní modagnei. Édémpé
no kaní: modagne?"





Okumpé gítoku, Larabí
ro:ngkídí:dém gípí:dokupé
bojerungko asilo ursuto.

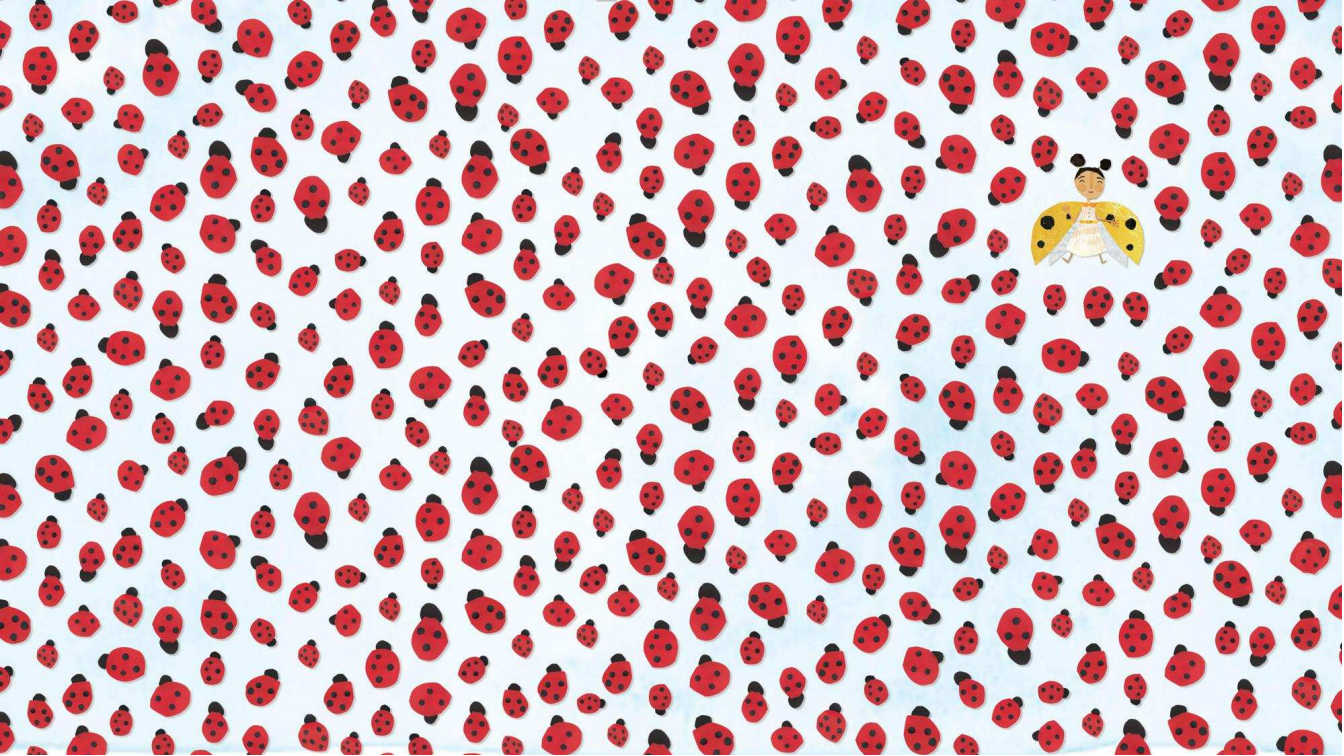


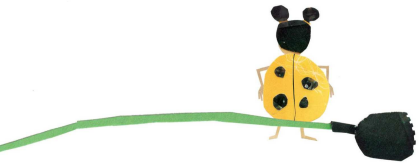
"Ngo lékoda ngok alapsém
ro:ng yondanma:bo!"
émna lusuto.



Lékoném émmumpé
so:mannam légangé
idaggom édílosin aropé
mé:la ro:ng yonma:bo.







Sé Lupangko

Sém pola nokké atíko luyin supénam kamilo kéíkké binam gogla luposunam bo luposulangka émna lupa:dung.
Luseg ségla lunamkídí:do, abíg admur-adyar kamilo, gomyar monado:sin atíko kaboma:milo nom luyinsulangka
émna:sin lupa:dung.

Gmail: pcaslit.neisel@gmail.com

khagiramdoley15@gmail.com

Phone: 6000264377

